

KANSAS★

TRANSPORTATION ALTERNATIVES



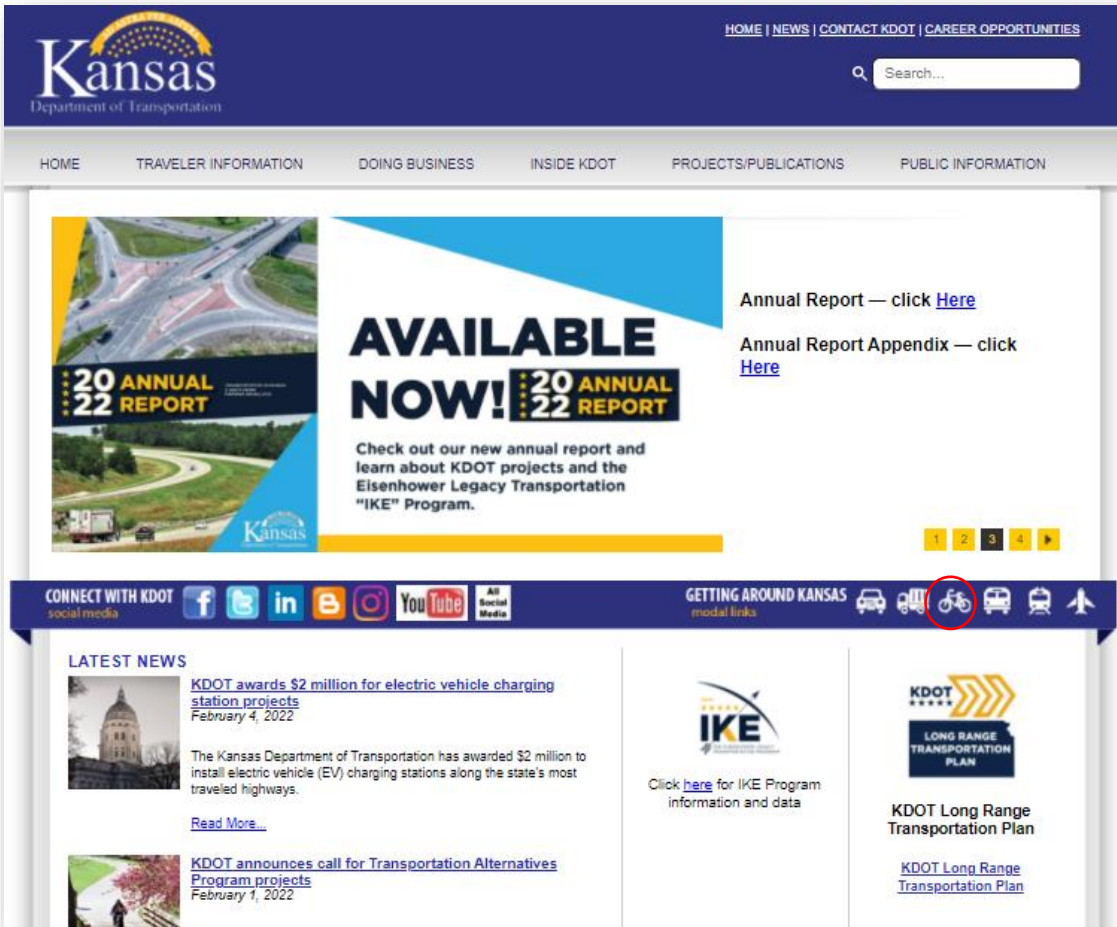
2024 Call for Projects

For Projects to be Bid Federal
Fiscal Years 2025 and 2026



KDOT TA Support Staff:
Jenny Kramer, Active Transportation Manager
Matt Messina, Chief of Multimodal Transportation





<https://www.ksdot.org/>

<https://www.ksdot.org/burRail/bike/default.asp>



KANSAS★

TRANSPORTATION ALTERNATIVES



2024 Call for Projects NOW OPEN!

Attend one of 3 webinars focused on **construction** projects and/or one of 3 webinars focused on Safe Routes to School (SRTS) **non-construction** projects.

Construction projects, including Safe Routes to School construction projects:

[Online Concept Paper](#)

[Word copy of Concept Paper](#)

IMPORTANT The online submission portal **does not save** work in progress and submissions **must be completed** within a single session. The Word document is provided to prepare responses prior to your online submission.

***Please note,** the full application is basically the same as the Concept Paper except for a few additional questions and required accompanying documents such as Letters of Support and a Resolution of Support.

[TA Program Guide](#) focused on construction projects - This guide is focused on the application for construction projects; use as a complement to webinar slides available below.

Informational Webinars for Construction Projects:

2/5 – 10-11am. Register [here](#).

2/8 – 2:30-3:30pm. Register [here](#).

2/9 – 11am-12pm. Register [here](#).

Slides are available [here](#).

Recording will be available the week of February 12th.

TA Construction Scoring Sheets for Ped/Bike Category

[Comprehensive](#)

[Categorical](#)

- Available on the webpage:
 - Concept Paper links and Word versions
 - Program Guides
 - Slides
 - Scoring sheets
 - More!

<https://www.ksdot.gov/bureaus/burtransplan/TransAlt.asp>

Webpage

KANSAS

TRANSPORTATION ALTERNATIVES



- Slides and Webinar recording will be available on the TA [webpage](#)
- Slides already available
- Recording will be available after the Feb. 9th webinar

Webinars: Feb. 5, 8, 9, 2024

Introductions and Active Transportation News



New Staff!



Kansas Active Transportation
Enhancement (KATE)



Road Safety Audit Trainings



Kansas Active Transportation Plan

KANSAS ★
TRANSPORTATION ALTERNATIVES



New and Continuing

Continuing

- Non-urbanized areas of [WAMPO](#) and [MARC](#) eligible to apply. Lists on another slide.
- Concept Papers still required and are due by March 1. Full Application due May 17, 2024
- Flint Hills, Topeka Metro, Lawrence, and St. Joseph (MO) MPOs are eligible applicants

NEW!

- On-line application – hard copies and flash drives with digital docs no longer accepted
- Limited engineering technical assistance available during the Concept Paper and application phases



New and Continuing

NEW!

The Kansas Vulnerable Road User Safety Assessment (VRUSA) was published at the end of 2023 complete with recommendations and the identification of high risk and high injury networks.

In response, the Bureau of Transportation Safety has committed \$3M per year of Highway Safety Improvement Program (HSIP) funds to support up to 20% match on ped/bike/SRTS TA projects that meet certain criteria.

Projects will be scored based on the following criteria:

- Project is in community with populations under 5,000.
- Project is identified a disadvantaged based on the Climate and Economic Justice Screening Tool.
- Project is on a corridor prioritized in the VRUSA
- Project includes safety countermeasures identified in the VRUSA and FHWA STEP Guide



New and Continuing

NEW!

- Preliminary Engineering (PE) will be included as a participating expense on construction projects at 80:20 pro rata and eligible for match support up to 20% using HSIP funds
 - PE Consultant selection will need to follow the KDOT Bureau of Local Projects quality-based selection process using KDOT's [Consultant Selection Guide](#)
- Safe Routes to School **non-construction** projects changes:
 - Fund at 100% using KATE funds for required 20% match
 - No max on Master Plan development
 - PE removed as stand-alone option
 - Continued: max on education and programming at \$50,000

New and
Continuing

 Kansas Active Transportation

ROAD SAFETY ASSESSMENTS TRAININGS

COMING
SPRING 2024



PURPOSE OF TRAINING

Join us for an all-day training on conducting a local Road Safety Assessments focused on concerns specific to pedestrians and bicyclists exploring safety, accessibility, comfort, and convenience.

This training is designed for city and county representatives, transportation professionals, advocates, and community members.



TRAINING LOCATIONS

- Topeka - 3/13/24
- Kansas City - 3/19/24
- Hutchison - 3/28/24
- Garden City - 4/2/24
- Wichita/Sedgwick Co - 4/10/24
- Salina - 4/25/24
- Pittsburg - 5/1/24
- Hays - 5/7/24



Registration is FREE. Lunch will be provided.
For more information and to register, visit:

Register Today!



 Kansas
Department of Transportation

 LTAP
KANSAS LOCAL TECHNICAL
ASSISTANCE PROGRAM

KANSAS ★
TRANSPORTATION ALTERNATIVES



Program Timeline

Date	Activity
February 1, 2024	Call for Projects, Concept Forms available and Press Release issued.
March 1, 2024	Project Concept Forms due. Concept forms must be submitted on Qualtrics .
March	Project Concept technical assistance and feedback period.
End of March 2024	Application link will be emailed to local sponsors who completed the Project Concept Form and met eligibility requirements.
May 17, 2024	Applications must be submitted on Qualtrics On-Line Application Portal
May 20 to June 30, 2024	Application review period.
Summer 2024	Project selections and public announcement of awards.



Qualtrics On-Line Concept Paper

- Components of application:
 - Primary, secondary and co-sponsor information
 - Project category: Ped/Bike, Historic, Scenic and Environmental, or Safe Routes to School
 - Countermeasures that will be applied, e.g. speed management, road diet, crosswalks, etc.
 - Project attributes, e.g. identified in a planning document, overcomes major barriers, addresses equity, etc.

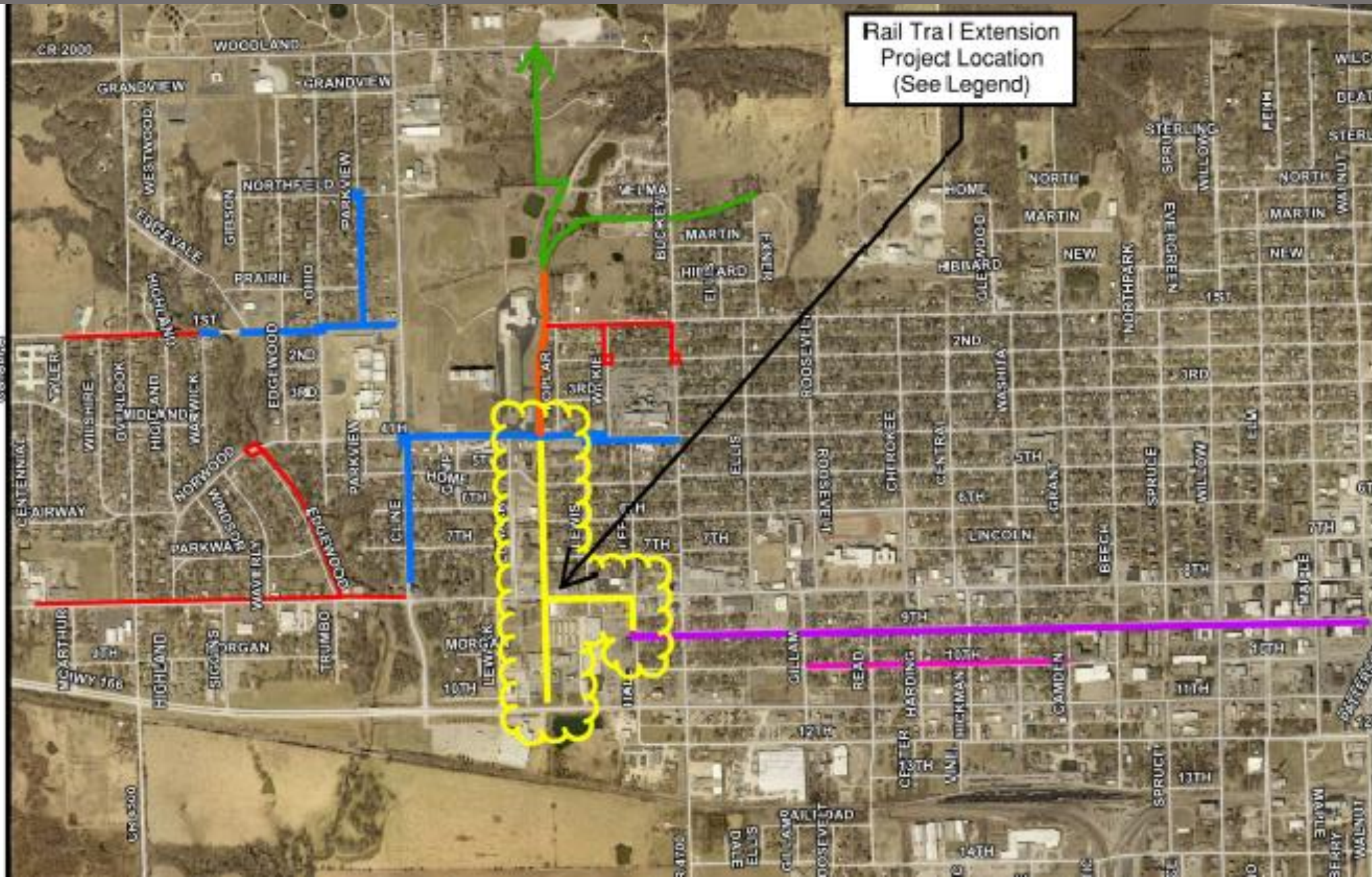
Qualtrics On-Line Concept Paper, cont.

- Components of application:
 - Project title
 - Project scope and description
 - Design guidance used, if applicable
 - Significance and need
 - Benefits of project
 - Project location/address
 - Cost estimates

Qualtrics On-Line Concept Paper, cont.

- Components of application-attachments:
 - Location map
 - Completed sketches or designs if applicable
 - Photos

Examples of Attachments - Maps

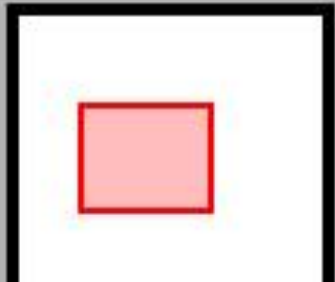


Engineering
 Engineering Department
 102 W 7th
 COFFEYVILLE, KS 67337
 VOICE: 620-252-6100
 FAX: 620-252-6175
 www.coffeyville.com

1 in = 1,000 ft

City of Coffeyville Sidewalk Grant Projects

- 10th St CDBG Sidewalk App.
- 9th St CDBG/MARP Grant
- 2014 EPA Brownfields Trail
- 2021 KDOT TA App.
- Future Bike/Ped Trails
- 2019 Safe Route to School
- 2021 Safe Route to School App.



(Item B)

Examples of Attachments - Photos



Examples of Attachments – Design plans



LEGEND

- CONCRETE PAVEMENT (6" UNIFORM) (AE)
- SIDEWALK CONSTRUCTION (4") (AE)
- SIDEWALK RAMP
- EXISTING RIGHT-OF-WAY
- CURB & GUTTER, COMBINED (AE)
- CROSS ROAD PIPE (36") (RCP)
- CROSSWALK SIGN AND POST
- FENCE (SPECIAL)(4') / RIGHT-OF-WAY PURCHASE



Review Process

- Project Concept Forms **are required** and will be due **3/1/24**
- Feedback and Application Packets will be given to all applicants, no later than March 31, 2024
 - Project Concepts will be reviewed as they are received, and application links emailed once initial review of each project is complete
- Applications are due **May 17, 2024**
- Review period to go through end of June
- Awards expected to be announced in Summer

TA Program Overview

Eligibilities

Eligible Applicants*

- Local governments
- Transit Agencies
- Natural resource/public land agencies
- School districts, local education agencies, schools (SRTS-non-construction projects)
- Tribal governments
- Small MPOs
- Non-urbanized members of MARC and WAMPO
- Non-profit entities

*A Federal Employer Identification Number (FEIN) is required to accept federal funds

Ineligible Applicants

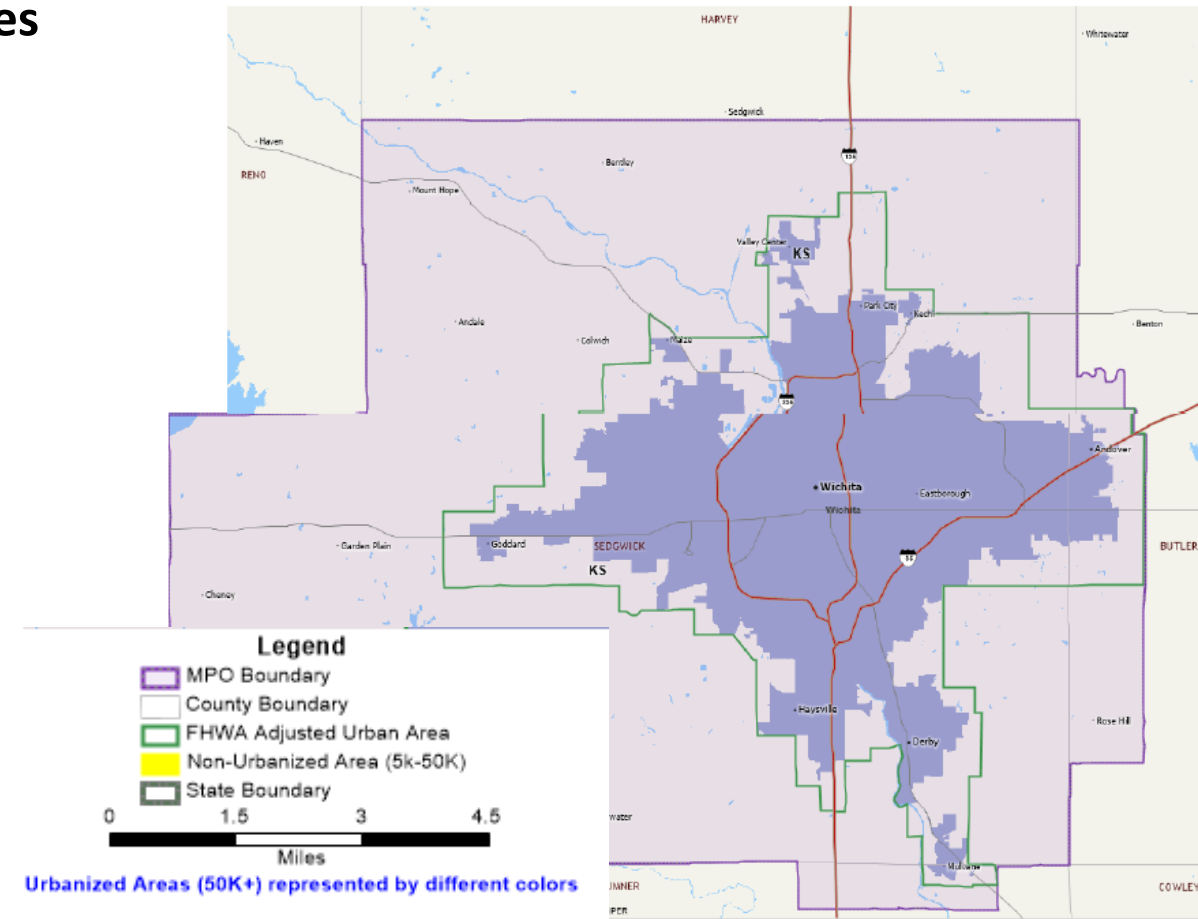
- KDOT
- Urbanized Areas of MARC MPO and WAMPO



Eligibilities

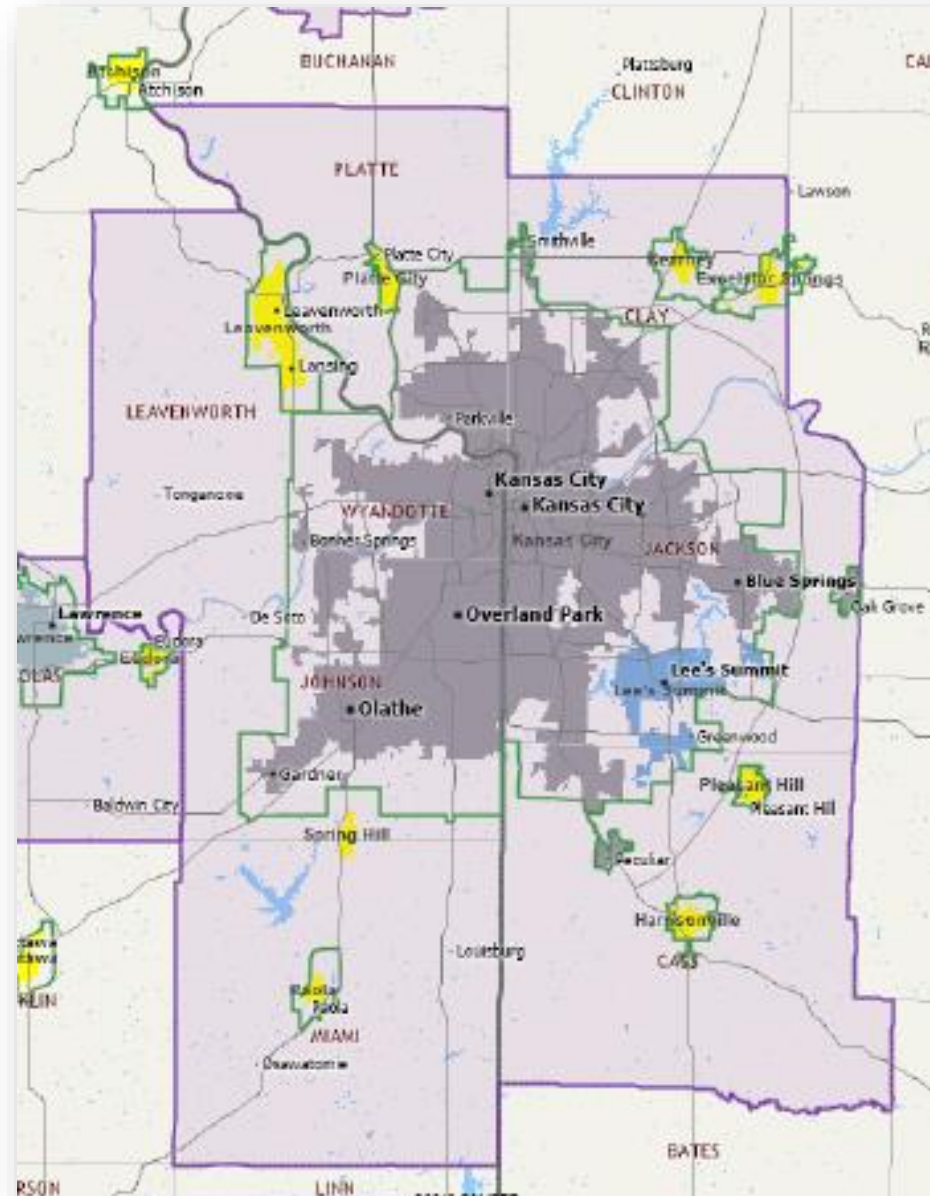
WAMPO FHWA Adjusted MPO and Urbanized Boundaries

- Clearwater
- Rose Hill
- Cheney
- Garden Plain
- Viola
- Andale
- Colwich
- Mount Hope
- Bentley



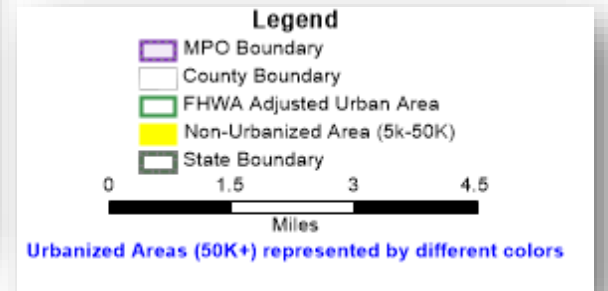
- Note: Eligible communities are those within the MPO boundary but outside the FHWA adjusted urban area

Eligibilities



MARC FHWA Adjusted MPO and Urbanized Boundaries

- Osawatomie
- Louisburg
- Spring Hill
- De Soto
- Tonganoxie
- Leavenworth
- Paola
- Lansing



Eligible Projects and Activities



**Pedestrian and
Bicycle/Non-Motorized
Transportation**



**Safe Routes to School –
K-12**



**Historic/Archeological
Transportation Activities**



**Scenic and
Environmental**

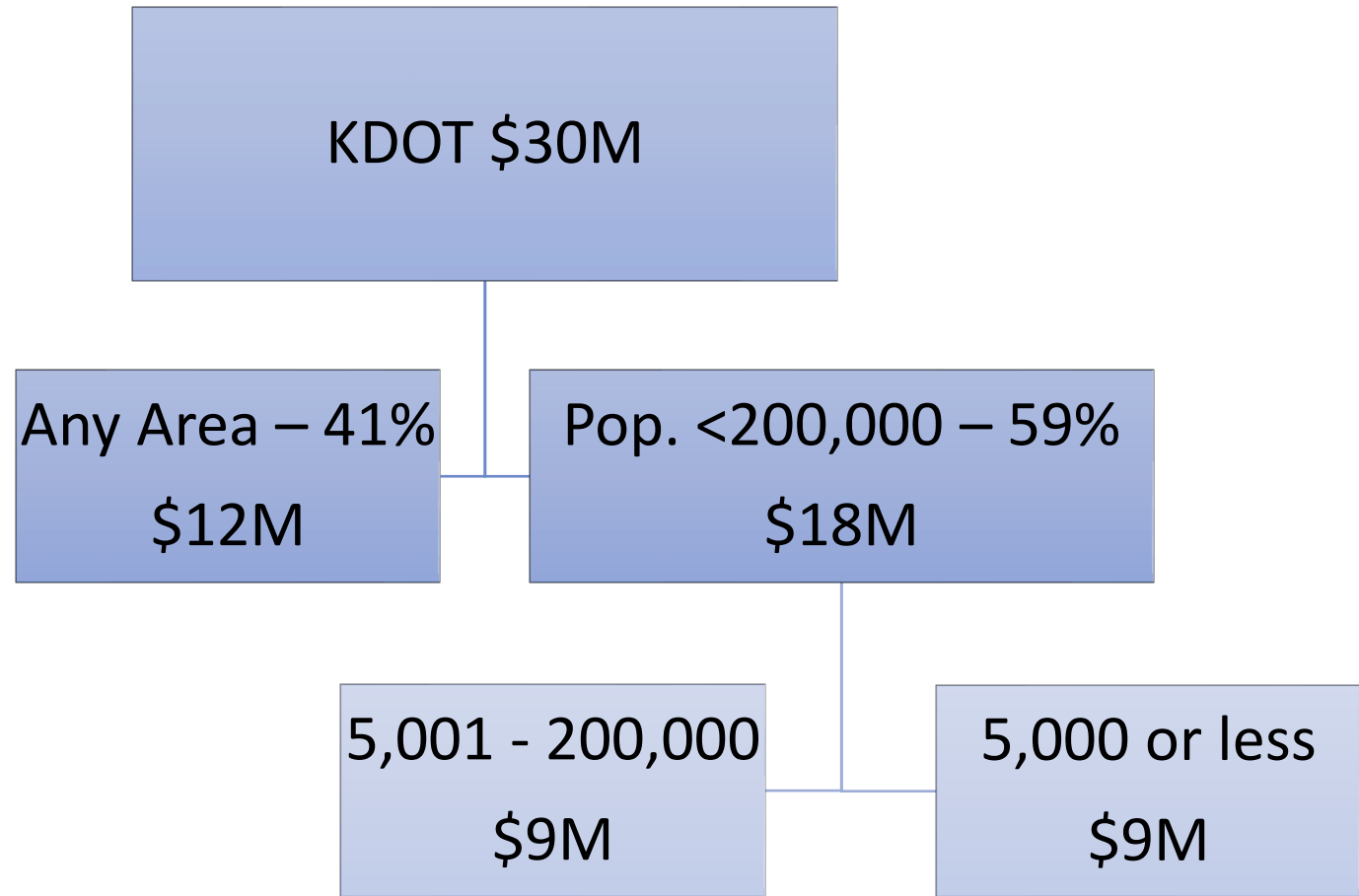
Ineligible Projects and Activities*

- Signing, landscaping, lighting and other scenic enhancements as independent projects
- Acquisition of scenic easements and scenic or historic sites
- Operation and administrative expenses
- Public art
- Standard roadway and bridge infrastructure items unless ped/bike focused
- Operation and maintenance of historic transportation facilities
- Transportation museums

*This is not a comprehensive list

Estimated KDOT
Apportionment for FFYs
2024-25

Funding



Pedestrian and Bicycle General Category

Project included Pedestrian Hybrid Beacons, widened pedestrian refuge island, ADA upgrades, and installed signage and pavement markings.



Painted and protected bike lanes



Reduced travel lanes from 4 lanes to 2 lanes with a two-way left-turn lane and bicycle lanes in each direction.

Pedestrian and Bicycle General Category



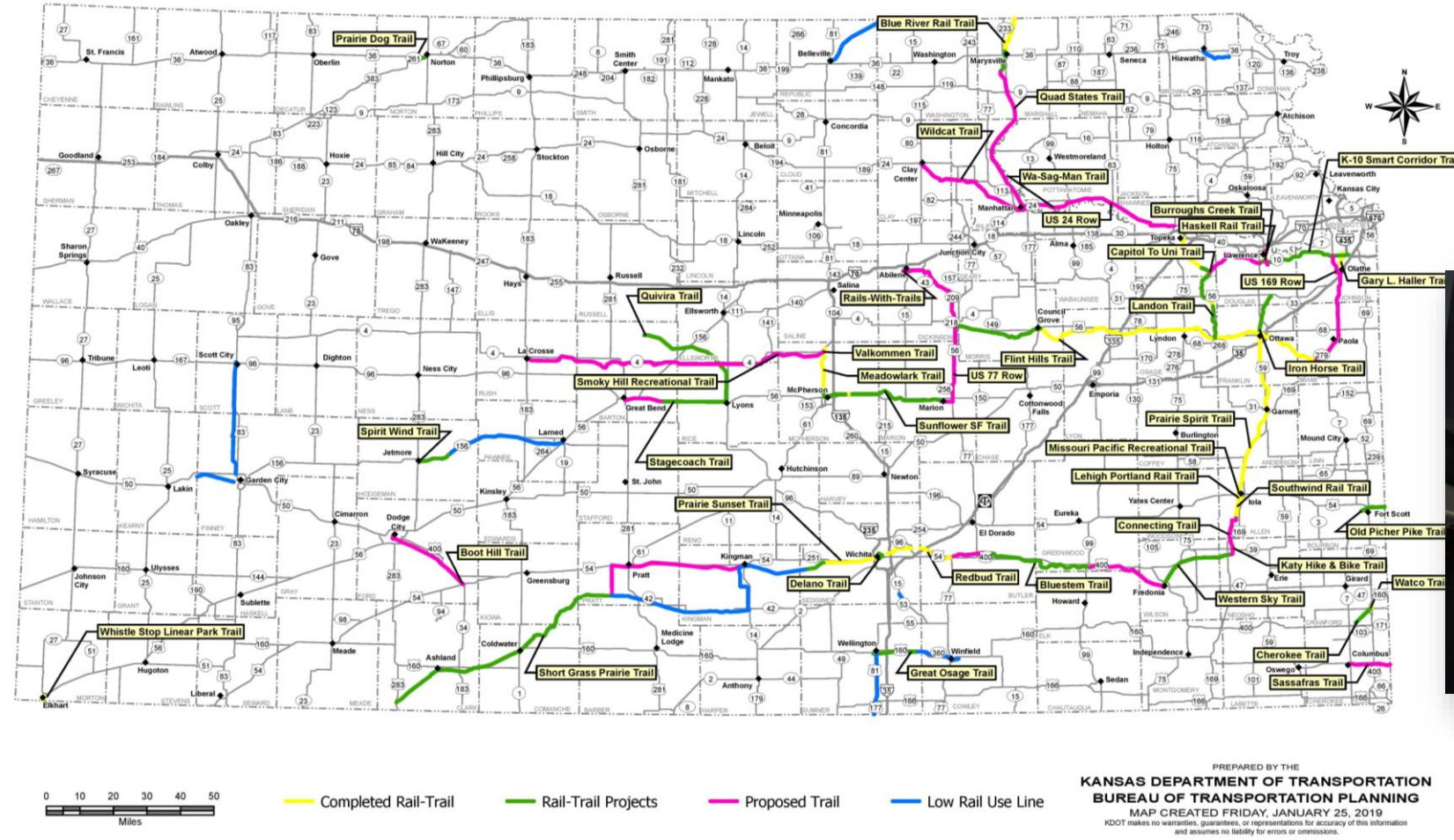
Project included parking lane with porous pavers, widened the sidewalk, and updated crosswalks to ADA standards.

Project included a nonmotorized trail connecting High School to downtown



Pedestrian and Bicycle/Non-Motorized Transportation: Conversion of Abandoned Railway Corridors to Trails

Kansas Rail-Trails



Kansas Flint Hills Trail

Safe Routes to School - Non-Construction

- Focus on the following areas:
 - Safe Routes to School Master Plan development
 - Education and Programming
- Separate application and webinar
- Please note stand-alone PE/design projects are no longer a category of SRTS but integrated into construction projects



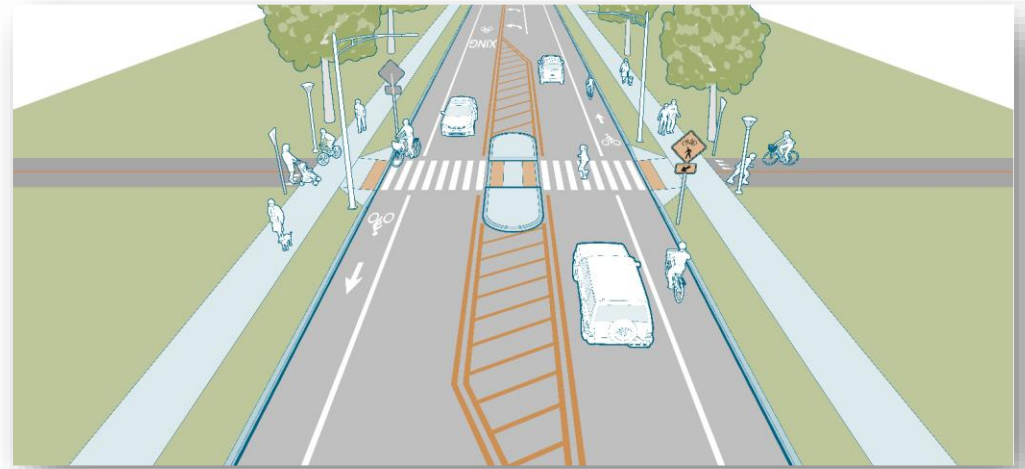
Kansas
Safe Routes to School

KANSAS ★
TRANSPORTATION ALTERNATIVES



Safe Routes to School

Funds improvements on routes to improve safety to/from school identified in an approved community plan.



Kansas
Safe Routes to School

KANSAS ★
TRANSPORTATION ALTERNATIVES



Historic

- Historic Preservation & Rehabilitation of Historic Transportation Facilities:
 - Preservation of buildings and facades in historic districts
 - Restoration of historic buildings for transportation-related purposes
 - Access improvements to historic sites
 - Restoration of railroad depots, bus stations and lighthouses
 - Rehabilitation of rail trestles, tunnels, bridges and canals
- Archaeological Activities
 - Research, preservation planning, and interpretation
 - Developing interpretive signs, exhibits, and guides
 - Inventories and surveys

Scenic and Environmental

- Scenic Turnouts and Overlooks
- Outdoor Advertising Management
- Streetscaping or Corridor Landscaping, Vegetation Management
- Stormwater Mitigation
- Wildlife Management



Hiawatha Streetscape TE-0455-01

Local Cash Match on Construction Projects

- A minimum of 20% cash match required
 - HSIP funds available to fund up to 20% match on projects that meet safety, equity and population criteria
- Does not include non-participating or ineligible expenses, e.g.:
 - Right-of-Way (ROW)
 - Utilities

Project Requirements



Compliance

- **All projects must** meet state and federal requirements including:
 - **Public involvement** – including adjacent property owners
 - **The Uniform Act** – whether or not federal funds will be used
 - **NEPA** – verify the project is not harmful to environment
 - **ADA** – Americans with Disabilities Act, reasonable access to project
 - **Competitive bidding** – projects are let by KDOT unless otherwise approved
 - **Davis-Bacon Wage Rates** - which state that contractors will conform to federal minimum wage requirements

PROJECT CONTACTS

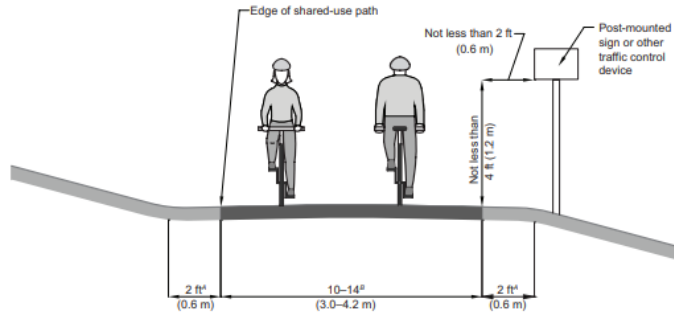
Project Category Representatives

- Jenny Kramer
Active Transportation Manager
KDOT, Transportation Planning
jenny.kramer@ks.gov
- David LaRoche, P.E.
Safety/Traffic Engineer
Federal Highway Administration
david.laroche@dot.gov
- Bill Legge, P.E.
Road Team Leader
KDOT, Local Projects
bill.legge@ks.gov
- Patrick Zollner
Deputy State Historic Preservation Officer
Kansas State Historical Society
Patrick.zollner@ks.gov

Bike/Ped Design Guidance

Guide to Bicycle Facilities, 4th Edition

- On steep grades to provide additional passing area; or
- Through curves to provide more operating space.



Notes:
A (1V.6H) Maximum slope (typ.)
B More if necessary to meet anticipated volumes and mix of users, per the Shared Use Path Level of Service Calculator (9)

Figure 5-1. Typical Cross Section of Two-Way, Shared Use Path on Independent Right-of-Way

Design Guides:

- [FHWA Rails with Trails Best Practices and Lessons Learned \(May 2021\)](#)
- [FHWA On-Street Motor Vehicle Parking and the Bikeway Selection Process \(Feb 2021\)](#)
- [AASHTO: Guide for the Development of Bicycle Facilities \(2012 – 4th Edition\)](#)
- [FHWA Safe Transportation for Every Pedestrian \(STEP\)](#)
- [FHWA: Achieving Multimodal Networks: Applying Design Flexibility and Reducing Conflicts \(2016\)](#)
- [FHWA: Separated Bike Lane Planning and Design Guide \(2015\)](#)
- [FHWA: Small Town and Rural Multimodal Networks \(2016\)](#)
 - [Small Town and Rural Design Guide: Facilities for Walking and Biking](#)
- [Institute of Transportation Engineers \(ITE\): Designing Walkable Urban Thoroughfares: A Context Sensitive Approach](#)
- [PEDSAFE: Pedestrian Safety Guide and Countermeasure Selection System](#)
- [BIKESAFE: Bicycle Safety Guide and Countermeasure Selection System](#)
- [National Association of City Transportation Officials \(NACTO\): all design guides](#)
- [FHWA: Incorporating On-Road Bicycle Networks into Resurfacing Projects \(2016\)](#)

https://www.ksdot.gov/bureaus/burRail/bike/KAT_Planning_Resources.asp

Key Acronyms and Definitions

- CE: Construction Engineering/Inspection. Engineering, management, and inspection of a project during the construction phase.
- BIL: Bipartisan Infrastructure Law
- FFY: Federal Fiscal Year. The federal fiscal year runs from October 1 to September 30. Federal funding for projects is based on the FFY.
- FHWA: Federal Highway Administration.
- IIJA: Infrastructure Investment Jobs Act – the new transportation bill
- KDOT: Kansas Department of Transportation
- Let/Letting - date is the date by which bids on a construction project are opened.
- LPA: Local Public Authority. This is the city or county that the project is taking place in.
- MPO: Metropolitan Planning Organization. There are several MPOs in the state that create transportation improvement plans for the areas they cover.
- PE: Preliminary Engineering. This encompasses all plans, etc. that are created during the project planning process.
- PS&E: Plans, Specs and Estimate
- ROW: Right of Way. The land owned on either side of the roadway by the responsible entity (state, federal, local) is considered the Right of Way. Prior to construction temporary or permanent easements may need to be acquired to allow room for the project.
- TMA: Transportation Management Area. An area designated by the Secretary of Transportation having an urbanized area population of over 200,000
- SRTS: Safe Routes to School
- Utilities: electricity, gas, water, or sewage



Save the Date!

Cost Share Program Applications Opening Soon!

Applications accepted beginning
Monday, Feb. 12 through **Thursday, March 21**

We will host an informational webinar on Tuesday, Feb. 20



Please visit our webpage at
[http://www.ksdot.gov/CostShare/
CostShareProgram.asp](http://www.ksdot.gov/CostShare/CostShareProgram.asp)
for more information and a link to
the webinar registration.

Q&A

Submit Additional Questions to:

KATE@ks.gov



Thank You!
Jenny Kramer
*Active Transportation
Manager*
Multimodal Transportation

