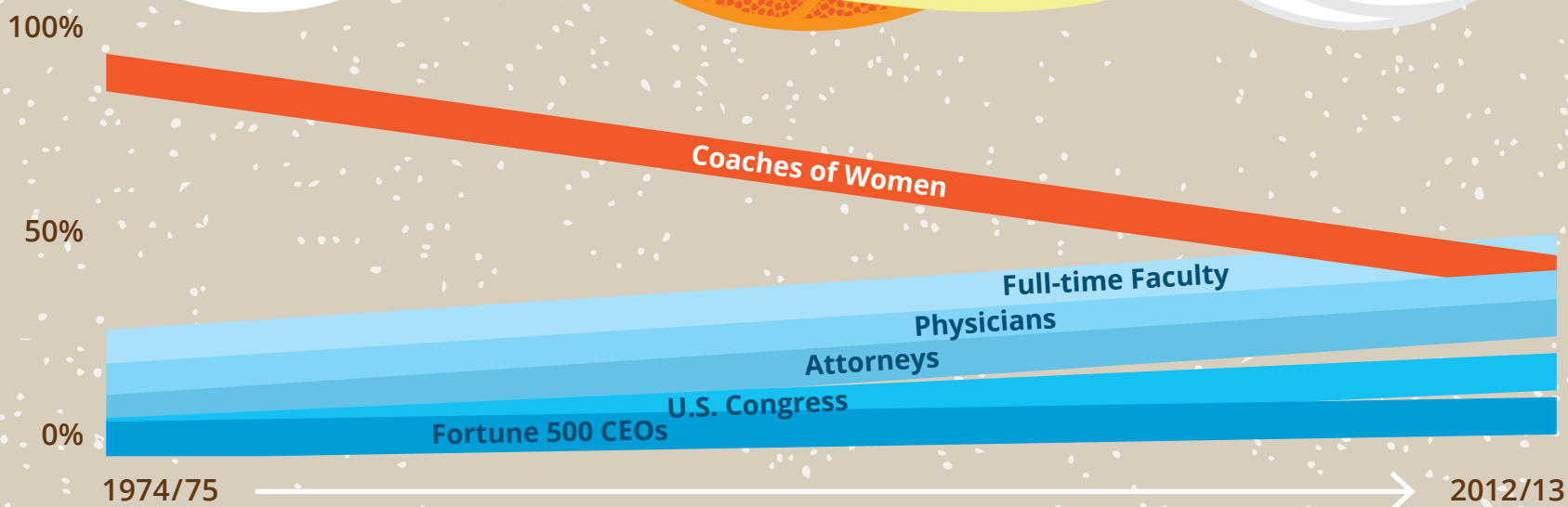
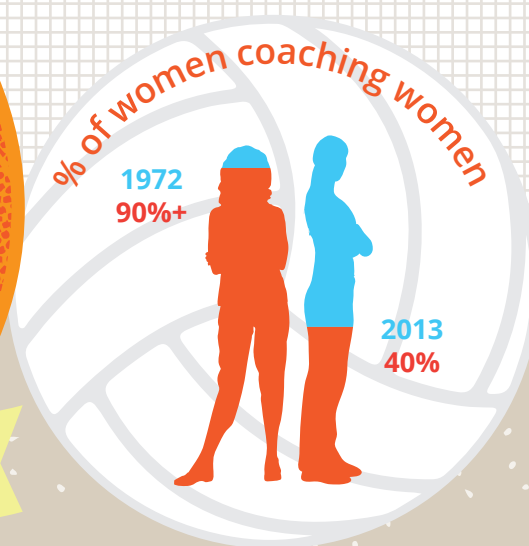
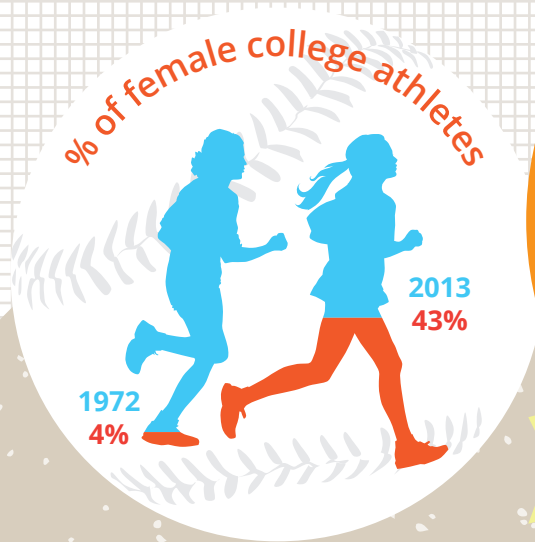


# THE STATUS OF WOMEN IN COLLEGIATE COACHING:

## A Report Card



Percentage of Women in Various Occupations vs. Coaching

### 2013-14 GRADES FOR SELECT NCAA FBS SCHOOLS BASED ON THE % OF WOMEN HEAD COACHES OF WOMEN'S TEAMS

**A** 100-70% | Cincinnati (80%)

**B** 69-55% | Texas (63.6%) • Miami (60%) • Penn State (60%) • UCLA (57.1%) • Washington State (55.6%)  
Florida State (55%) • Illinois (55%) • LSU (55%)

**C** 54-40% | Iowa (53.8%) • Michigan State (53.8%) • Minnesota (53.3%) • Colorado (50%) • Florida (50%) • Georgia Tech (50%)  
Kansas State (50%) • Northwestern (50%) • Ohio State (50%) • Oklahoma (50%) • South Florida (50%) • Washington (50%)  
California (46.7%) • Michigan (46.7%) • Connecticut (46.2%) • Louisville (46.2%) • Maryland (45.5%) • TCU (45.5%)  
St. John's (44.4%) • Marquette (42.9%) • Wisconsin (42.9%) • Temple (41.7%) • Boston College (41.2%) • Stanford (40.9%)  
Clemson (40%) • North Carolina (40%) • Oregon State (40%)

**D** 39-25% | Duke (38.5%) • Notre Dame (38.5%) • South Carolina (38.5%) • Tennessee (38.5%) • USC (38.5%) • Villanova (38.5%)  
Wake Forest (37.5%) • Iowa State (36.4%) • Providence (36.4%) • Texas A&M (36.4%) • Georgetown (35.7%) • Nebraska (35.7%)  
Auburn (33.3%) • Georgia (33.3%) • Mississippi (33.3%) • Mississippi State (33.3%) • Missouri (33.3%) • Oregon (33.3%)  
Seton Hall (33.3%) • Arizona State (30.8%) • Indiana (30.8%) • Virginia (30.8%) • Pittsburgh (30%) • Purdue (30%)  
DePaul (28.6%) • Rutgers (28.6%) • Utah (28.6%) • Baylor (27.3%) • Kansas (27.3%) • Arizona (25%) • Texas Tech (25%)

**F** 24-0% | Alabama (23.1%) • Vanderbilt (22.2%) • Virginia Tech (20%) • Syracuse (18.2%) • West Virginia (18.2%)  
Arkansas (16.7%) • Kentucky (16.7%) • NC State (16.7%) • Oklahoma State (12.5%)

**HEAD OF THE CLASS**  
Cincinnati had the highest percentage of women coaches.

**BOTTOM OF THE CLASS**  
Oklahoma State had the lowest percentage of women coaches.

In these 76 "big time" FBS athletics programs, women head coaches continued to decline from 2012-'13 (40.2%) to 2013-'14 (39.6%). The purpose of this report card is to increase awareness about the decreasing percentage of women coaches, present a mechanism to hold institutions accountable, and provide a starting point for national dialogue.

To find out **why women coaches matter** and to view the full report including method, grading criteria, data for all coaching positions, and grades by sport and FBS conference, visit [www.TuckerCenter.org](http://www.TuckerCenter.org)