

Resources for White-Tailed Deer Management

Chronic Wasting Disease (CWD) Monitoring Program

The Florida Fish and Wildlife Conservation Commission (FWC) has an ongoing CWD monitoring program and detected the first case of a CWD-positive deer in June 2023 during normal surveillance efforts. This always-fatal disease of deer has been found in Holmes County, and in response, the FWC has established a CWD Management Zone with special regulations to aid in slowing the spread of the disease. Continued surveillance within the CWD Management Zone and throughout the remainder of the state is necessary to manage CWD in Florida. For more details and a map of the CWD Management Zone, visit **[MyFWC.com/CWD](https://myfwc.com/CWD)** and click “Learn More.” Hunters can support the FWC’s surveillance efforts by voluntarily submitting deer heads from healthy deer for no-cost testing (antlers can be removed and retained by the hunter).

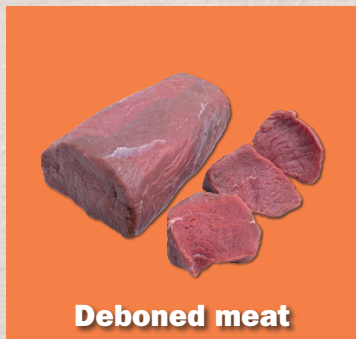
For hunter submissions and to report any sick/dead deer (or other sick/dead wildlife), please call the CWD hotline at **866-CWD-WATCH (866-293-9282)**.

Florida Rules Regarding Carcass Importation

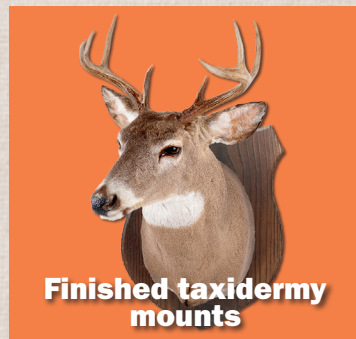
Hunting Outside of Florida or in the CWD Management Zone?

Be aware of rules that prohibit importing or possessing whole carcasses or high-risk parts of deer, elk, moose, caribou and all other species of the deer family originating from any place outside of Florida. The new Executive Order also prohibits the export of whole carcasses and high-risk parts originating from the CWD Management Zone.

These rules allow the import/export of:



Deboned meat



Finished taxidermy mounts



Clean hides and antlers



Skulls, skull caps and teeth if soft tissue has been removed



MyFWC.com

NOTE: Deer harvested from a property in Georgia or Alabama that is bisected by the state line AND under the same ownership can be imported into Florida, unless prohibited by the new CWD Management Zone Executive Order.

These rules continue the FWC’s work to protect Florida’s deer populations by reducing the risk of chronic wasting disease (CWD) further spreading into the state. Learn more at **[MyFWC.com/CWD](https://myfwc.com/CWD)** and **[MyFWC.com/Deer](https://myfwc.com/Deer)**

These rules do NOT include a permit option to import whole deer or high-risk parts from Georgia, Alabama or the CWD Management Zone.