

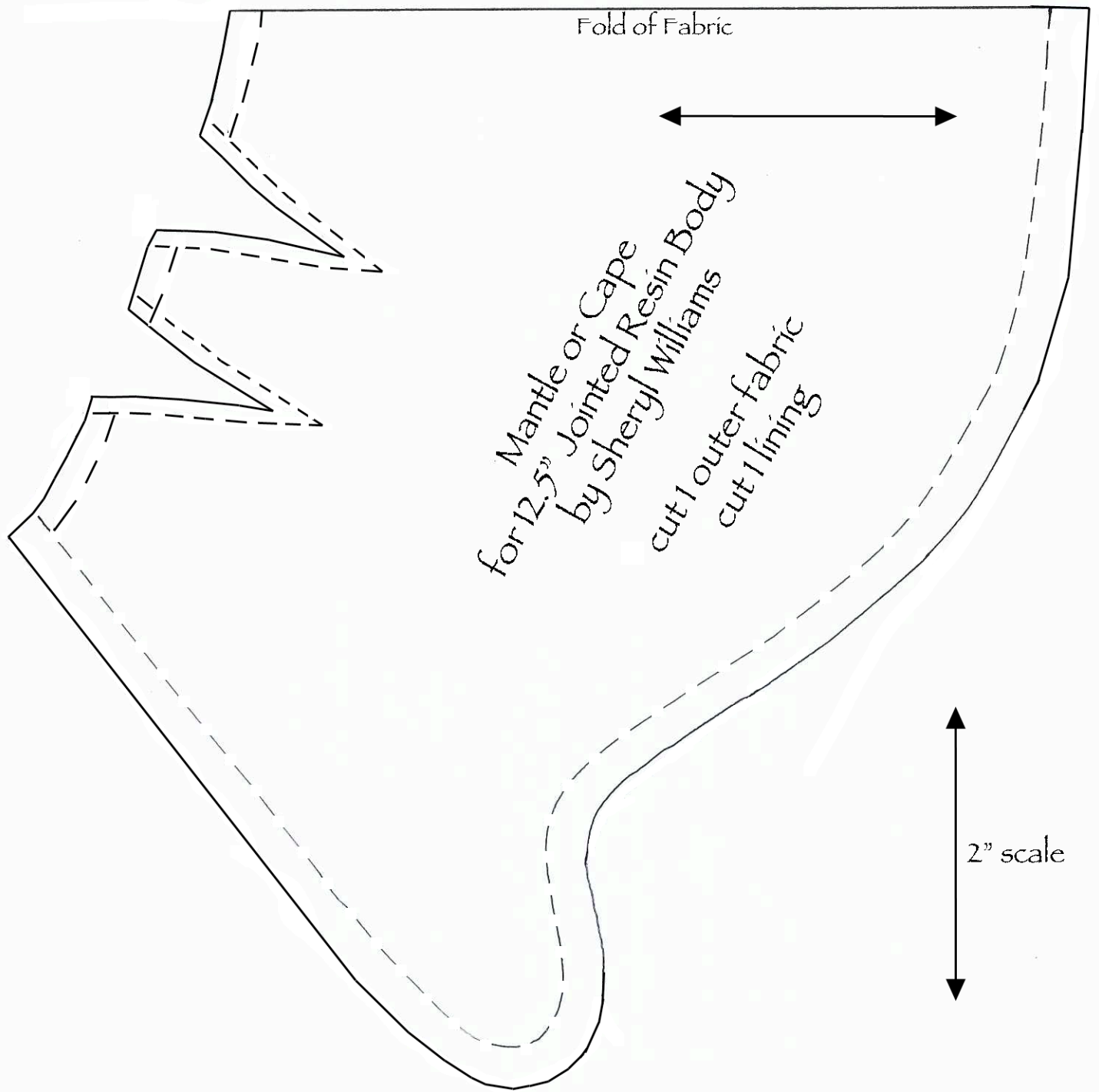
Mantle (Cape) Pattern

to fit the 12.5" Jointed Resin Body

by Sheryl Williams



Designed for the March 2020 Virtual Doll Convention



Mantle or Cape for the 12.5" Jointed Resin Body
for the March 2020 Virtual Doll Convention
By Sheryl Williams

This charming wardrobe addition can be used for many dolls – both antique and contemporary. It is easy to enlarge or reduce the pattern to suit your needs. Use your imagination for trimming this very versatile cape. Ruched ribbon, fringe, woven trims or embroidery could be used to embellish this piece. Feel free to experiment and have fun!

This cape is really “Beyond All Limits”.

*Notes: Using 1/4" seam allowances unless otherwise stated.
RST=right sides together, WST=wrong sides together
CF=canter front CB=canter back*

Supplies:

- 8" x 16" fashion fabric of your choice (cotton, lightweight wool, thin velveteen)
- 1" X 5" fashion fabric for the collar cut on the bias
- 8" x 16" lining fabric
- 1 yard of 1/4" rickrack trim
- Embroidery floss
- Hook and loop for closure

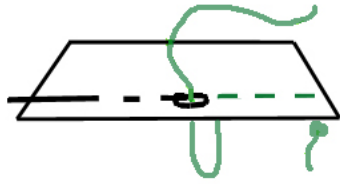
Instructions:

1. Cut out 1 piece of fashion fabric, 1 collar and 1 lining.
2. Place the lining and fashion fabric RST and sew around the outside edge, but not the color edge.
3. Clip curves and turn to the right side. Press well.
4. Baste together the neckline edge. Fold the cape RST on the darts and stitch using a 1/8" seam allowance. Press the two darts toward the back. Overcast the seam allowances.
5. Place the bias collar along the neckline edge with 1/4" of fabric extending on each side. Clip the cape neckline if needed to make the collar fit well. Stitch collar onto neck edge.

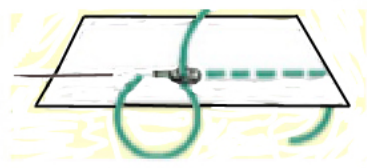
6. Turn in the $\frac{1}{4}$ " pieces of collar at each end and fold the collar over the neck edge, turning under $\frac{1}{4}$ " on the raw edge on the back. Slipstitch in place. Press well.
7. Sew the rickrack around the cape approximately $\frac{1}{4}$ " from the finished edge using a running stitch. Begin and end at the front below the collar. I added a loop of rickrack just below the collar on the cape front and another at the CB. *Refer to photos of the cape.*
8. Cut a 30" piece of embroidery floss and divide the 6 strand piece into 2 thread strands. Thread your needle with the two thread strand and sew crossing stitches over the rickrack in a contrasting color. *See photo of embroidered trim on the rickrack.*
9. Sew a hook and loop at the CF for closure

Embroidered trim on rick rack

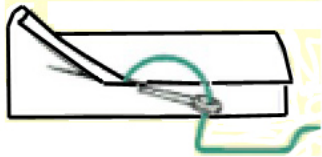




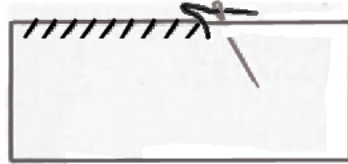
Running Stitch



Back Stitch



Slip Stitch



Overcasting Stitch