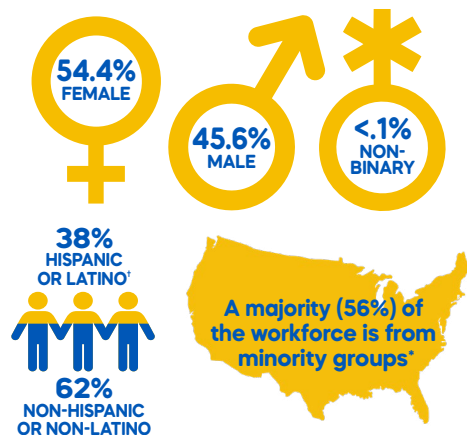
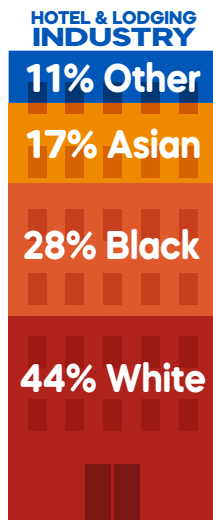


# AHLAF Industry Benchmark Survey Report

## THE HOTEL & LODGING INDUSTRY BOASTS A DIVERSE WORKFORCE



\*"Hispanic or Latino" is an ethnicity and tracked as a separate category from race, to mirror BLS' reporting structure.  
\*There is higher overall diversity in hotel and lodging compared to the national average and other industries, such as construction, accommodation and food services, retail, and arts, entertainment, and recreation, Bureau of Labor Statistics

## BUT REPRESENTATION DECREASES AT THE TOP

Minorities in Management Levels

**36%**



Minorities in Executive Positions

**24%**

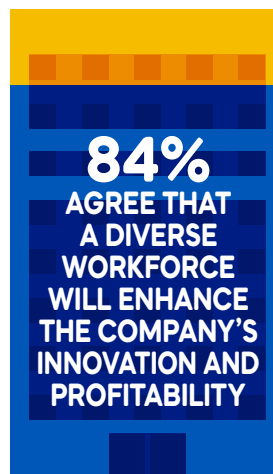


Women in Executive Positions

**43%**



## THE HOTEL & LODGING INDUSTRY IS COMMITTED TO DE&I



An industry survey was sent in partnership with BW Research between November 2nd, 2021, and May 23rd, 2022, with respondents representing over 250,000 employees in over 1,800 locations.

## START & GROW YOUR DEI JOURNEY

Check Out the AHLA Foundation's DE&I Best Practices Guide To Learn More.  
[dei.ahlafoundation.org](https://dei.ahlafoundation.org)